

GREAT WESTERN RLY.

GENERAL

- (1) SHORT HIST OF GWR GWR MAG. 1921 P. 485
- (2) LIST & MAP OF RLYS ABSORBED GWR MAG. 1921 P. 160-1
- (3) ART. 75TH ANNIV. OF GWR. GWR MAG 1913 P. 160
- (4) ART "EARLY DAYS OF GWR" " " " P 172

- VG PHOTO 1ST GWR TIMETABLE 1839 " " " P 180
- VG ART. THE GROWTH OF THE SYSTEM GWR MAG 1913 P 184 (shown section of Rail)
- ART. COMMERCIAL DEVEL. 1838-1913 " " " P 188
- COL. PHOTO GWR COAT OF ARMS " " 1911 P 1
- ART OF GWR COAT OF ARMS " " 1909 P 57
- ART HIST OF GWR MAG " " 1909 P 251
- ART & MAP. "OUTLINE OF GWR HISTORY" " " 1935 P 456
- LIST OF PRINCIPLE OFFICERS 1833-1935 " " 1935 P 462
- ART "OPENING OF GWR " " " P 463.
- ART 1ST ATLANTIC STEAM CROSS. ("G. WEST") " " 1938 P 153.
- ART. 1ST ISSUE OF GWR MAG " " 1938 P 451
- GWR MAG. HISTORY R. MAG. DEC 38 P 458
- GWR COAT OF ARMS (HISTORY) GWR MAG 1930 P 337 (AND OTHER AFFILIATED COMPANIES)
- GWR RAILWAY ROUTE MAP. (COPY OF MY BIG GWR MAP) (LECTURE) CV 189A & 190 FOR

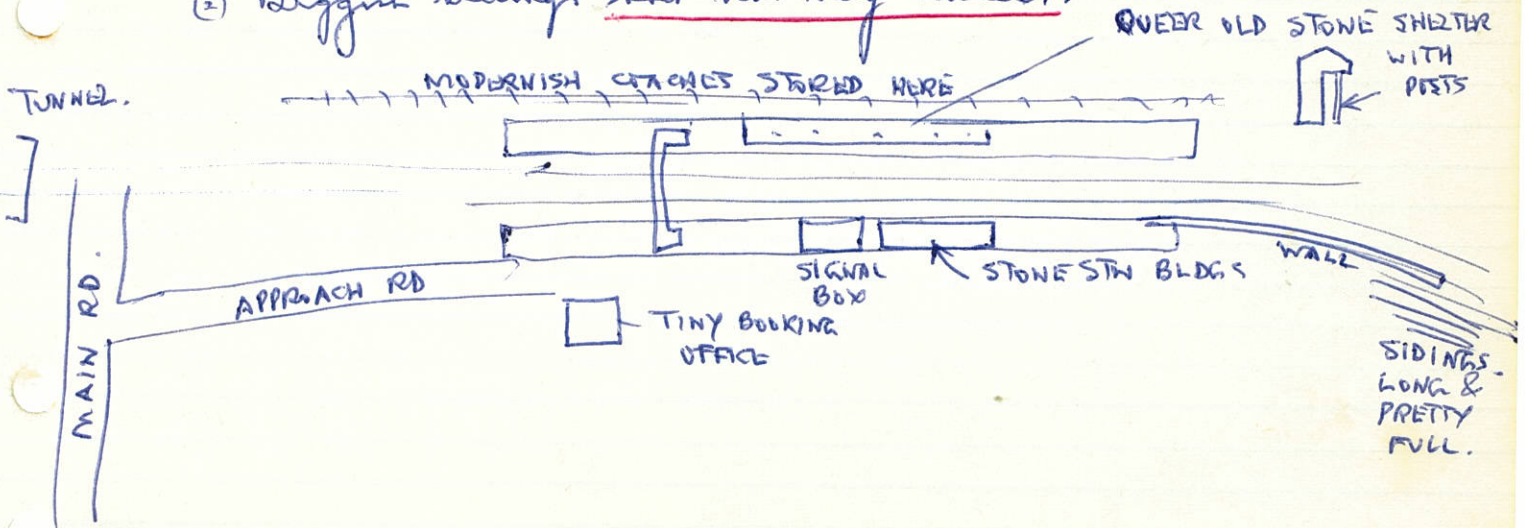
GREENWAY STN.

PH. STN (NOW MODIFIED TO DWELLING HOUSE) CV. 123

July 62

GREETLAND.
(CLOSES 9TH SEPT 1962)

- ① Used to be a depot for track prefabrication, but now transferred to ? (just south of Huddersfield)
- ② Biggest sidings but not very access.



SEE ALSO BERRY PORT & GWEND VALLEY RLY.

GWENDRAETH VALLEY RLY

ART. GWR MAG 1923 P. 61

HARTFORD
(CHESHIRE)
(SEVERAL LINES.
CONVERGE)

44883 Headed South on SLOW LINE
70036 " " " FAST "

CV 275
CV 274A

HAY.

ART. HAY TO PONTRILAS GOLDEN VALLEY LINE R. MAR DEC 38 P439

ART IN BRANCH LOGS SLS 1961 DEC P374

PH. BRANCH TRAIN AT HAYANT STN

CV.103A

Photo of line of old G.W. Coaches in Sth Siding

HAYES & HARLINGTON

51/29

NOTE: - RMAG. OCT 59 P730 :- SECT. BETWEEN ALPHINGTON HALT
(NR EXETER) & CHRISTOW (CLOSED TO PASS. JUNE 9TH 1958) WAS IN
FINAL STAGES OF DISMANTLING IN EARLY SEPT. 1959
BUT FREIGHT STILL RUNNING BETWEEN HEATHFIELD & CHRISTOW ON
3 DAYS/WEEK (SEPT 1959).

HEATHFIELD
BRANCH
(FROM EXETER
(ST THOMAS)

VIA LONGDOWN
CHRISTOW ET.

PHOTO OF LONGDOWN STN REMAINS (GOT BROWN GW TOILET HOLDER) (TETON VALLEY LINE) BW 28/16

PHOTO OF CHRISTOW STN (FROM FOOTBRIDGE) HEAVY RAIN
- - - - - (UNUSUAL LEADING RAMP.)

BW 28/17
BW 28/18

PHOTO ASHTON STN (& L.C.) RAINING

BW 28/19 & CV 158

PH OF ATTRACTIVE STW 1966

{ CN 266
{ BW 90/17

HELSTON
STN.
(EX MIDLAND
RLY)

at NANCEGOLLAN STW, Port Engl. reported
Camping Coach 9919 (EX 2427) 57' TOPLIGHT.
JULY 1962.

HELSTON
BRANCH.
(FROM GWINEAR RD)

REF

RLY MAG. 52 P644

SEE ALSO (POSSIBLY)
TIVERTON JCT

HEMYOCK
BRANCH
(FROM TIV. JCT)

CULM VALLEY BRANCH R. WORLD FEB 53 P 38

PH. HEMYOCK STN

BW 26/26

PH. OF 1-42 PM EX TIV JCT. AT HEMYOCK STN

BW 29/19

PH. PRES. & MILK TRAIN AT HEMYOCK STN.

CV 147A

HENLEY ON
THAMES BRANCH

REF (SUMMARY)

RLY MAG 52 P 359

SHORT REF (SUMM)

HENLEY IN ARDEN
BRANCH
RLY MAG 52 P 431

JULY 1962

HEYWOOD

① Quite good supply of Freight Stocks in Sidings adjacent to STW.
Took photos of G.W. 4W Tube Wagon.

② Line of L.M.S. condemned vehicles (WORTH PERIODIC VISIT) SEE OVER
(PHOTO) (MAP)

HIGHBRIDGE
(CROSSING)

PHOTO WARSHIP D828 (MAGNIFICENT) ON FREIGHT TRAIN BW26/25

HIGHWORTH
BRANCH
(FROM SWINDON)

ART.

R. MAG OCT 59 P.706

HISTORICAL M.R.S.

AT. OCT. 1966 :-

- SUBSCRIPTIONS TO HON. TREAS. E. BLAND 10 STUART AVENUE, EALING, LONDON W.5.
- CHANGES OF ADDRESS, RESIGNATIONS, BADGES, HON. ^{MEMBERSHIP} SEC. C. E. VIER, 20, NORFOLK RD, NEW BARNETT HERTS.
- PURCHASE OF PHOTOS & BORROWING BOOKS. HON. LIB. C. M. STREVEN, 6, FAIRFIELD WAY BARNETT, HERTS.
- NEWSLETTER ITEMS. HON. NEWSLETTER EDITOR RE LACY, 13, REDDINGS, WELWYN GDN CITY HERTS.
- PHOTOS, ARTICLES FOR JOURNAL HON. JOURNAL EDITOR I. F. KING, 37, WILHELMINA AVEN. COULSDEN SURREY
- MATTERS CONCERNING GENERAL POLICY & ADVICE CO-RES. SEC. LW MOLE 35 STRODE RD, FOREST GATE LONDON E.7.
- GENERAL SECRETARY. J. W. SHINN, 5, CLOISTER MEWS, ENGLEFIELD RD, THALE, READING BERKS
- MEETINGS SEC. I. J. PUSSEY 33, BURLINGTON AV. KEW GDN SURREY
- JOURNAL EDITOR L. R. TAVENDER, 70, ST MARYS RD POOLE DORSET
- DNCS, PHOTOGRAPH ALBUMS. J. A. GARDNER 1, ROBIN HOOD COURT, ROBIN HOOD LANE SUTTON SURREY.

HOLCOMBE BROOK
BRANCH

FROM BURY

SHORT ART & PHOTO

R MAG 52 P424&5

1961

HONEYBOURNE

" FOR STRATFORD BRANCH, BIRMINGHAM, WARWICKSHIRE
LEAMINGTON, BROADWAY, WINCHESTER & CHELTENHAM.

PAINTED OUT (CLOSED BRANCHES!)

- ① 2 - MOGULS STATIONED HERE PERMANENTLY.
- ② Railcars in 1961 stay in sidings for long periods.
- ③ Long G.W. Closed Coach Body on Blocks (Didn't visit - raining!)

HUDD. to PENISTONE LINE & BRANCHES T. ILLUS. MAY 59 P 248

INVERNESS

ART. INVERNESS TO WICK LINE R. MAG JAN 61 P. 14

PH. INV. TO THURSO/WICK TRAIN SPLIT @ GEORGE MAS. JCT. { CV. 284A & 285
97/20 to 22

PH. HELMSDALE STN & BUILDINGS. (ON INV. to THURSO BRANCH) } 97/33 to 36
CV 293 to 94

PH. OF RLY BRIDGE OVER R. SHIN ADJ. TO INVERSHIN STN. (INVERNESS TO WICK LINE) CV. 291A
(BUILT BY SUTHERLAND RLY CO).

PH. MORNING GOODS EX WICK FOR INVERNESS NR KINBRACE STN CV 292

PH. 6 AM. TRAIN EX WICK & THURSO FOR INVERNESS NR KINBRACE STN. CV 292A

ISLE OF MAN
RLYS.

ART. R MAG JULY 41 P310
COL PHOTO OF TRAIN IN DOUGLAS STN
PH. & ART
REF.
REF

BW 27/44
R. MAG 53 P191
- - - - - P430
R MAG 50 P575

ISLE OF WIGHT
RLY.

I. O. W (NEWPORT JCT. RLY)
I O W RLY.

R. MAG OCT 59 P. 721

R. WORLD SEPT 53 P199

KEMBLE STW
FOR
TETBURY & CIRENCESTER

PH. WATER TOWER (IN MIST) ON KEMBLE STW
Ph. " " & PUMPING SHED

CV 83.
61/28 & 29

PH. KEMBLE STW SCENE (4N Railway for C.R. etc)
" " " (Water Tower)

CV. 172
CV 172 A

~~KB~~ KERRY BRANCH
FROM ABERMULE

REF.

PH. OF TRAIN ON BRANCH @ FRONRAUTH (VG) CV 1900 ~~RL~~ MAR 1947 P. 190
BW 64/31 & CV 205A
& CV 206

KIDDERMINSTER

PHOTO SHEDS SUN. MORN JULY 29TH 62

BW 26/1

KINGHAM STW

PH PRAIRIE HD PASS TRAIN FOR CHELT. LEAVING KINGHAM STW CV 118

PH . KINGHAM STW

CV 119

VG LONG ART. & PHOTOS: "THE TORQUAY BRANCH. T. ILLUSTRATED JULY 58 P360

KINGSWEAR
BRANCH. VIA TORQUAY
(FROM NEWTON ABBOTT)

PH. LARGEST SAILING SHIP IN KINGSWEAR (ITALIAN) CV 161A
RU KINGSWEAR HARBOUR FROM TRAIN CV 162.

KYLE OF LOCHALSH BRANCH

ART, PH & MAP VG

PH. MORNING GOODS @ PLOCKTON STN.

PH. K. of LOCHALSH STN SCENE

PH. MORNING GOODS APP. K. of LOCHALSH STN

PH. STRATHPEFFER STN REMAINS (SPUR BRANCH)

BW 104/26 ^{RAIL} SWING BRIDGE OVER CAL. CANAL AT LACHANHARRY

" / 27 - - - - -

CV 319A & 320 - - - - -

CV 324 to 325

BW 104/19 to 23

STEAM CRANE BEING CUT UP @ KYLE STN SIDINGS.

R. MAG 51 P10
CV. 282A. & 97/12 & 13
CV. 283.
97/14 & 15
CV. 291

JUNE 73 } CANAL HAS
PRIORITY OVER RLY

LAMBOURN VALLEY RLY
& LAMBOURN BRANCH

ART. MAPS ETC

RLY MAG. 1954 P739

REF.	RLY "	1949 P349
PHOTO OF WELFORD PARK STN & "SHORT" SIGNAL BOX		61/2 & 3.
PHOTO OF LAMBOURN STN REMAINS		61/4
" " " GOODS SHED		61/5 & 7
" " " WATER COLUMN		61/6 & 8

SEE ALSO POSS. TAVISTOCK BRANCH

LAUNCESTON STN
(BRCH. FROM PLYMOUTH)

PH. PLYMOUTH TRAIN IN LAUNCESTON STN

CV149

REF. R. MAG 54 P. 441

SEE TAVIST BRANCH

LAUNCESTON
BRANCH. VIA TAVISTOCK.
(FROM PLYMOUTH)

USEFUL SUMMARY.

RLY MAG 1954 P441

LED BURY JCT

PHOTO OF TRACK TO GLOUCESTER

CV. 78A

LEOMINSTER BRANCH
FROM WORCESTER

PHOTO REMAINS OF TRACK BED NR STONE PRIOR
REF CLOSURE BRAMYARD TO LEOMINSTER

CV43.
R MAG 52 P780

LIMPLEY STOKE
TO HALLATROW.
LINE

ART. MAP & PHOTOS
PH. BRISTOL EXC. TRAIN PULL IN LIMPLEY STOKE STN.
PH. OF BRANCH GOING UNDER S&D LINE AT MIDFORD
PH. OF COMBE HAY STN Remains

R. MAG 53 P265
CV175A
CV.182
CV.185

L1STOWEL X BALLYBUNION
RLY

PHOTO STN YARD scene with Louisa

BW99/26

LIVERPOOL

RLY DEV. IN LIV. (INCL. RUNCORN BRIDGE) R MAG MAR 59 P.193
(A CART.)

ART. GWR MAG 1923 P 155

LOOK UP THE PRIVATE BREAKERS YARD
JUST NEAR LLANYMYNECH STN ON THE
S. & M. LINE (ANYTIME)
(REPORTED BY J. STRACHAN & C. STREV.)

LLANFYLLIN
BRANCH
(FROM LLANYMINETH)

ART. R. WORLD SEPT 52 P 208

PH LLANFYLLIN STW

CV 80 & 80A

PH. 12-55 PM TRAIN TO LLANFYLLIN AT LLANYMINETH CV 81

!

? TAWAT VALLEY LINE

LLANGYNOG
BRANCH

PH LLANRHAIDR STW REMAINT CV. 170A

STAYED AT QUEENS HOTEL. TEL. LAN. 383 18/6 BFB
NOT BAD.

LLANIDLOES

PHOTO	STW BUILDING		BW 2/15 & CV 207
"	" " & SHED (VQ)		BW 19/4
"	STW BUILDING.	92/13 & 14 &	BW 45/19

PORTER MR GEORGE?

TOOK HIS PHOTO BW / ?

LLANTARNUM STW

PHOTO LINE OF OLD COACHES IN LLANT STW CC 35A

Colin St. report. W14293 Cler. Bojie

LLANTRISANT.

MAY 62.

- ① Black Clerestory Coach in siding's near road bridge.
- ② Very long Clerestory Body (RED) on blocks.
- ③ Fairly large goods siding's.

PH. OF STW

CV 81A

CHIMNEYS

HANBLINGS PRICE & DETAILS MRN OCT 65 PX

LOCO PARTS

PAGE 1

WHEELS

HANBLINGS PRICE & DET. MRN OCT 65 PX.
TENDER (JACKSONS) KC " " " PXIV.

ENGRAVED NAME & N° PLATES

HOBBYTIME

- DETAILS

M.R.N. OCT 65 P. XX
& R.M. JULY 65 P. XII

LOCO PARTS
PZ

HAMBLINGS. GWR NAME & N° PLATES. R.M. JULY 65 P. XII

P.C. MODELS 800 diff sets. Price 6 + S.A.E. M.R.N. SEPT 65 P. XIX
7- OXHILL RD, SOLIHULL LODGE, SHIRLEY WARWICKS.

v.g.

DETAILED REVIEW OF CURRENT MODELS AVAIL WITH PRICES
M.R.C. OCT 65 P. 281

LOCO KIT
SETS AVAIL

LONG MARSTON STW

PH. W20 Railways Thru' Sth

CV123A

LOOE BRANCH

REF

RLY MAR SU P431

LOW GILL
BOX OR
STW
↓ GONE!

PH. CAMPING SITE MR LOW GILL BOX (SCOTTISH TOUR 1965) CV. 246
PH. 92016 HEADED GDS JUST THRO LOW GILL BOX (---) CV. 246 A.
DN 75001 " " APPROACHIM " " " CV 247.

LUDLOW

LUDLOW & CLEE HILL RLY.

R. WORLD MAR 60 P. 71

LYNTON & BARNSTAPLE
RLY

REF. REMAINS

RLY MAG 51 P136

COL. STR REPORTS 4W comb

~~W14640~~
W14640W

~~34' - 1 GA~~
~~19' - 1 B~~
34' - 1 GA 19' WB.

MACHYNLETH

Aerial view of Sdn & Valley
- - - - - goods siding & T Table
PHOTO OF UNUSUAL BUFFER STOPS (IRON MINK BODY)
PHOTO OF 6 CRT. COACH BODY (UNUSUAL VENTS OVER DOORS)
PH. OF MACHYNLETH STW FROM RD. APPROACH

BW 8/4 & CV 31A
.. /5 & CV 32
BW 32/33
UNKNOWN ORIGIN BW 32/37
CV 32A

See also, possibly CARMARTHEN
To ARBOR.

MAESY-CRUGIAU
STW

Ph of afternoon train to Aberystwyth with
FAMILY MR SALMON POOL.
SHORT ART. GIVING DETAILS OF EXPLOSION OF BOILER

BW 8/0.
CV. 26 (NOT)
RLY MAG NOV 38 P379

Ph. Milk Train at MAESYCRUGIAU STW

CV 209A

MALLAIG BRANCH

- PH. VIADUCT (CURVED) CV 240 & 240A
- PH. MALLAIG FISHING BOATS & FERRY CV. 241
-
- PH. EVENING TRAIN DESCENDING TO CRIANLARICH (From FORT WILLIAM) } CV 241 A
 PH. CAMP SITE AT CRIANLARICH } BW 81/28
- PH. RANNOCH STN WITH VIADUCT IN BACKGROUND CV 242 & 242 A
- PH. RANNOCH STN WITH VIADUCT IN BACKGROUND CV 306A
- PH. 7-25 AM EX MALLAIG @ RANNOCH MOOR STN BW 98/4
- PH. STONE CARVING OF JH KENTON (" " ") BW 98/7.
- PH. ARISAIG STN ON MALL. BRANCH 98/12

MALMESBURY BRANCH

SUMMARY

- PHOTO STN BUILDING
- " Low Shed
- " STN
- " SHED

- CV. 171 & RLY MAG 49 P208
- 61/35 & 36
- 61/37 & 38
- 62/1
- 62/2

MALVERN WELLS STN
EX. MIDLAND

PH. STW. REMAINS.

CV 124 & 124A

RLY. DEV. IN M/C. R MAG SEPT 57 P. 613.
MAN. TO CRENE LINE R. MAG SEP 60 P 601
MAN. SOUTH JCT. & ALTRIN. RLY T. ILLUS OCT 60 P 721
DEC 58 P 666

MANCHESTER.

MAN. SHIP CANAL RLY T. ILLUS OCT 59 P. 488
- - - - R. WORLD MAY 53 P. 120

MAY 62

RED BANK?

MANCHESTER (VICTORIA)

- ① NEAR SMEDLEY VIADUCT - SIDINGS USUALLY FILLED WITH PARCEL VANS ETC. (FOREMAN - MR IRELAND - took his photo in inspection saloon)

(EXCHANGE)
(& LOCAL AREAS)

- ② VICT. STN. (PARCELS INSPECTOR - BIG CHAP - MR O SHAY recommended FISH DOCK near PLAT. ① & 'FAIR' PLAT. (UNDER COVER - POTR FOR PHOTOS) FOR PARCELS VANS (SIPH ETC.)
- ③ ~~THE~~ PARCEL VEHICLES ON 'LONG PLAT' COME FROM ORDSALL LAKE & COME IN BEFORE 8 PM.

FORZC

MAY 1962.

MANCHESTER
(CENTRAL)

- ① met MR WILD IN LITTLE OFFICE ON FAR SIDE - states usually a parcel train on PLAT. 2 or 3 after 8 PM. Also said that occasionally a SR BIRDCAGE comes in N^o 515.


Central Sdn Bookings. Phone BLA 3677 + ask for Reservations.


CENTRAL ENQUIRY BUREAU. DEANSGATE 8353 (TRACK UPSETS ETC SUNDAY)

PH & ART GWR MAG 1907 P 130 & 152

MARAZION

MAY 62

- ① 2 - Camp. Coaches  with fishbelly bogies.
- ② 1 - Old 4W. Coach Body on Bluffers.
- ③ 1 - C.C.T. Body on Bluffers.

 VENTS } I think
 approx 100 yrs past
 STN on RIGHT towards
 'PENSANZE'.

N^o 9890 & 1 CAMP. COACHES (5) 'TOPLIGHTS' reported here July 62 (PAT ENGLISH)

MARKET DRAYTON
STN

VG. PHOTO STN, FOOTBRIDGE ETC C1888

BW 25/25

PH general view of Station (from bridge)

CV. 88

PH STN REMAINS 1970

CV 309

PH TERN HILL STN REMAINS 1970

BW 101/26 & CV 308A

MARLOW & WENLEY RLY.

R MAG. SEPT 57 1965

~~NICKEL~~
NICKEL SILVER SHEET
12" X 6" X .015" 3/8

MARN OCT 65
PVI

MATERIALS

SEE UNDER
WOOD FOR
WOOD STRIP ~~STRIP~~

~~1003 to 16 SWG. HOWELL DIMMOCK LTD, 40, LORDSHIP LANE, TOTTENHAM LONDON N.17
MODEL RLY CO KINGS CROSS R.M. JULY 65 P.XV~~

BRASS SECTION STRIP U.T.C (V.G) HBBYTIME MARN OCT 65 PXXI

BRASS TUBES (ALL SIZES) R.M. JULY 65 P.XV Model Rly King, Cuz
PLASTIC OFF CUTS (PERSPEX?). PLASTICS (M/C) LTD, 26, BUXTON ST (ARD. 4141 & 4567)
(NOT OPEN SAT) 1965

POLYTHENE SHEET 3/- TO (50" WIDE X 7 YD LONG WEIGHTED 1 lb 1 1/2 oz) Fernando Morstan

ETCHED COACH SIDES 3-LEVELS: - R. HIGGINS 52, MELBROOK RD. BAROLDSWICK, NR COLNE
(INF. FROM L & Y CHAP HODGSON @ XMAS EXHIB. 1965

Skid used by Goods Train
to Darby Browns Factory.

MELTHAM
BRANCH.

PHOTO OF NETHERTON STW ON MELTHAM BCH.
(FOUND OLD L&Y PAPERS IN STW)

BW 24/35&36

PHOTO 2 VIEWS OF MELTHAM STW
REF. SUMMARY 'CLOSING'

BW 24/37&38,
R MAG 49 P342

METROPOLITAN RLM

PH. OPENING OF RLY 1862 V.G. PHOTO WITH NAMES

BW 99/34

ROAD STONE MVAR @ RHAYADER STN

92/11

PH. TYLWCH HALT. STN. (NR LLANIDULLES)
PH Tracked approach LLANIDULLES STN

CV 277 92/12
CV 277A

MIDLAND & S. WEST JCT. RLY

ART ECT GWR MAG '1923 P. 493.

PH. CIRENCESTER ^(WATERMOOR) STN Remains

BW 63/24

PH Withington Stn remains (Tracks being lifted)

63/25

PH. Adversford Jctn

CV. 195A

" Withington Stn Scene (Tracks being lifted)

CV 196A

" FOSS CROSS STN

CV 196

" CIRENCESTER STN Remains

CV 197 & 197A

" Sunder Town Stn

CV 199

" Chisleton Stn remains

CV 198

" Dybburne Stn "

CV 198 A

M & S.W.
Jct Rly
MOW
GWR.

MINSTERLEY BRANCH.

PH. MINST. STW.

CV 109

PH. PONTESBURY STW (OW BRCH)

CV 109A

PH PLEALEY RD " - - -

CV 110

JUNE 62

① about 20 locs in SHED on left just before STW
going to YORK from M/C.

MIRFIELD

} looks access.

② Large goods sidings on Right just passed MIRFIELD STW.

LOOKS WORTH A VISIT.

PHOTO BY C KAYE (OUTSIDE M.E. EXHIB) 1961 BW 20/41 & 42
 DETAILS OF LES HOLLANDS UNION PACIFIC 16W GAS
 TURBINE LOCO & TENDER BY GENERAL ELECTRIC XMAS 65
 PHOTO & DESC. IN MODEL RAILROADER SEPT 1953.

MODEL PHOTOS SHEET 1

Turntable & Cooling Shed on my layout	BW 4	30 & 31
Station Scene	-	32 & 33
Station Building Close up	-	34
MOSTON SIG. BOX with PANNIER in foreground	-	35
Viaduct with TOAD in foreground	-	36
Goods Siding	-	37
3RD/BKE coach (clearest) with 4W Coach	BW 7	29
2nd TOAD & OF. Siphon G.	"	30
ALL 1ST Clearest & 4W Coach	"	31
3rd BKE Clearest.	"	32
0-4-2 Collet with 4W Coach	"	33
with Dean Good	"	34
Engine Shed & Goods Shed	-	35
Photos of Coach Beading (Several Coaches)	BW 9	3 & 4
Photo of 1959 Xmas Stand (1ST CHAM. SUP WIN)	BW 11	3, 4, 7, & 8 & 10
" " 1961 AVE ME. EXHIB. (1ST SILVER MEDAL WIN)	BW 11	9
PHOTO OF 1966 XMAS EXHIB. (JIM MURDITHS).	BW 11	41

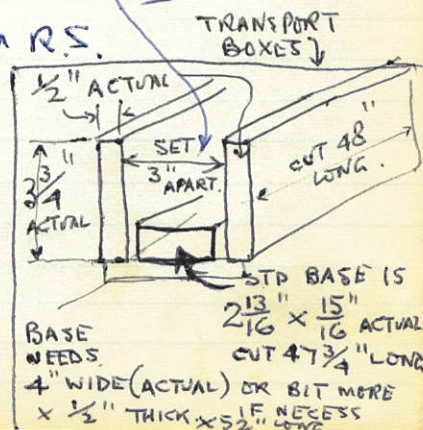
MODEL PHOTOS SHEET 2

Wooden Sides & ENDS SIPHON F	BW 12	3
" " " " " C	-	4
Set of PARTS of VOLUTE BOGIE	-	5 & 6 & 8
Twin gas CYL. & BUFF BEAMS SIP. F	-	7
PAIR OF FINISHED VOL. BOGIES	-	9
Model Siphon F. (unpainted) 1st Siph F.	-	10, 11 & 12.
ALICE DAMMS. (FOR 1961 EXH)	-	13 & 14
WOODEN SIDES & ENDS OF SIPHON C	-	7 to 12 & 26 to 29
" " " " " F	-	30
Siphon C unpainted	BW 13	37 & BW 16/36
PHOTO SIPHON G. INS. FRAME N ^o 1270 (UNPAINTED VARIOUS VIEWS)	BW 23	27, 28, & 29
PHOTO SIP. F. (PART PAINTED) (VAR. VIEWS)	BW 23	30 to 33 & BW 16/37
PHOTO OF B. MURTAGHANS PHOTO OF MY COACHES IN STN (VR)	BW 23	34
" " " " " OF ME AT WORK (MODELLING)	-	35
" " " " " MY SHORT BOGIE COACH (6-4" BOG)	BW 23	36
" " SET OF WOOD PARTS FOR SIP. G. (OUT FR.) N ^o 1447	BW 24	18 & 19
" " UNPAINTED SIP. G. (INS FR) N ^o 1270 (C. KAYE)	BW 34	1 & 29
" " " " " (OUT FR.) N ^o 1447	BW 34	2 to 5 & 35 & 36
" " " " " (CLOSE UP)	BW 34	37 to 39
" " " " " (INS FR.) N ^o 1270 (CLOSE UP OF BOG. & UND.	BW 34	30 & 31

PHOTO COVER COINS FOR SIP. G. Bw 34/34, 32, 33
 PHOTO CHASSIS VIEW CW SIP. INS. FRAMES --- /40.41
 PH. SIP. G (INS FR.) N^o 1270 --- /42
 PH. OF MY LAYOUT (TAKEN BY F WOLST) Bw 8/40 & 41
 DUKE OF EDINBURGH ENTRIES (ME EXH.) 1954 1954 ME AUG 12TH P182 (GIF)
 WINNERS & PHOTOS ETC 1957 (ME EXH) 1957 ME SEPT 12TH P57 (")
 PRINCIPLES OF EXHIBITION JUDGING (MASCHELYNE) ME AUG 1ST 1957 P160 (")
 PH. OF SET OF GUSSETTS & PLATES (MODEL SIPHON BW OPEN PLANKED) Bw 63/30 & 3
 PH. of BW open plank siphon. NEEDS MORE 63/32

DIMENSIONS OF EXH. STAND AT M.M.S.

LOWER DECK 5'-1" LONG.
 MIDDLE " 4'-0" LONG.
 UPPER " 3'-0" LONG.
 PH. 4W SIPHON B CHASSIS Bw 65/23 to 26
 " " " BODY Bw 65/27
 " CW SIPHON BODY 65/28
 " " CHASSIS 65/29
 4W SIP. VEHICLE (UNPAINTED) 65/31
 BW " " " 65/32



PH. 4W & BW Siphon Vehicles (UNPAINTED) Bw 65/34 & 35 MODEL PHOTOS
 " " " CHASSIS 65/36 & 37 P. 4
 " " " BODIES 65/38

PH. OF SET OF COACH PARTS. COMPO DIAG E26 MODEL Bw 66/8 & 72/24

PH OF SET of Coach mouldings (PAPER) MODEL E26 72/23

PH OF SET. PAPER MOULDINGS FOR 4W PARS. BKE VAN DIAG V6 78/15 & 16

PH " " " ALL 3RD DIAG C3. 78/17

" " " BKE/3RD DIAG D3. 78/18

PH of Set of wood Body Parts DIAG C4 78/19

PH of DIAG. MI MOULDINGS (MG. & PUNCHED ONLY) 80/23 & 24

PH of DIAG MI MOULDINGS (FINISHED) 80/28

PH. OF VARIOUS JEW MODELS @ 1965 XMAS EXHIB. Bw 10/15 to 19

PH. OF SET OF BODY PARTS. OUTSIDE FRAMED MONSTER DIAG P16 CV. 263 to 264A. 93/14

" " " INSIDE " " " P18 93/15

PH MONSTER BODY PARTS (MODEL) 95/20 & 21

PH Set of 4w/m plates & gussets for outside framed MONSTER P16 96/8 & 9.

BW 105 } FULL NEG OF TIN PLATE HORNBY BING ETC TAKEN WITH NEW CAMERA (CLOSE UPS).

CL 100 HORNBY HV METRO loco
 100A " LNER N^o 1 TANK loco
 101 " ETON IN BITS
 101A " " (RESTORED)

CL 102 HORNBY LMS BLACK N-1 TANK LOCO
 CL 102A " 2711 LMS LMS MAR.
 CL 103 " 2710 " LNWR.
 CL 103A " " " G.N.
 CL 104 " HV. METRO LOCO WITH CONTROLLER
 CL 104A " " " "
 CL 105 " " " "
 CL 105A ASS. 'O' G. LOTS OF DIFFERING SIZES
 CL 106 BING FOR GARRAGE GET FIFTH LOCO LMS LIV.
 CL 106A KARL BUB 4-4-0 Tender loco.
 CC 64A & 66A GAUGE 5 LNWR COMPO COACH BY CARLETTE FOR B/LowKE
 CC 65 DUBLU 6W & BERTIE PASS BKE VANS BR MARTIN
 CC 65A DUBLU LNER TEAK HORSE BOX & BOT. PASS COACH
 CC 66 " WR COACHING STOCK (CR & CHOC. LIV.)
 C.F. 56A ASS. HORNBY 'O' LITHO'D VANS
 " 57 - - - - -
 " 57A ASS. - - - - - TANKERS
 " 58 - - - - -
 " 58A ASS. TRIX FREIGHT WAGONS
 " 59 " DUBLU " "
 " 59A HORNBY 'O' FISH AN GWR AFT. REST G
 " 60 " " NE REFRIG " "
 " 60A LIONEL CABOORE & HOPPER.

MODEL PHOTOS P6.

CV 316A ASSORTED HORNBY 'O' ACCESS. (LINESIDE)
 CV 317 HORNBY 2710 LOCO & WAGON LNWR
 317A - - - - -
 318 BING GET FIFTH LOCO & LMS COACH.
 318A HORNBY WINDSOR STN. WITH GERMAN COMPARISON.
 319 LIONEL COACHES WITH METRO TYPE LOCO

MONMOUTH (MAY HILL)
BRANCH FROM
ROSS - W - WYE

- | | | |
|-----|--|-----------------------|
| PH. | FAMILY ON SYMONDS YAT | CV 50 A. |
| PH | SYMONDS YAT STW | CV 51 |
| PH | TUN. APPROACH FROM SYM YAT STW | CV 51 A |
| PH | VIEW OF WINDING TRACK GOING UP TO ROSS (OUT OF TUNNEL) | CV 52 |
| PH | ----- | (JUST |
| PH | WINDING TRACK UP FROM SYM. YAT TUNNEL | (APPR. TUNNEL) CV 52A |
| | | { COPY BW 25/46 } |
| | | { BW 37/6 } |
| PH | SYMONS YAT STW SCENE (WITH TRAIN) C1898 | PH. BW 99/32 |

See possibly MON BR (FROM CHEPSTON)
also " WYE VALLEY

MONMOUTH BRANCH
FROM PONT. RD.

ART. MON TO PONT RD BRANCH R WORLD NOV 54 P256

- | | | |
|-----|---------------------------------|---------|
| PH. | RAGLAN STW REMAINS | CV 36A |
| " | " " PLAT WITH TREES | CV 37 |
| " | " " GATE APPROACH (WITH FAMILY) | CV 37A |
| " | TUNNEL ENT. TO VSK STW | CV 38 |
| " | DINGESTOW STW REMAINS | CV 38A. |

RLYS OF MONMOUTH (VG) R. MAG SEP 152 P.618
MON & TINTERN BRANCHES R. WORLD JUL 58 P.215
MONMOUTH STN. " " AUG 53 P.185

MONMOUTH (BRCH)
SEE ALSO WYE VALLEY
FROM CHEPSTOW
MON TROY TO
ROSS & CHEPSTOW
(PASS. W/D. FROM)
JAN 5TH 1959

~~MON TO PONT RD BRANCH - NOV 54 P.151~~
MON TROY BCH. " " JUL. 58 P.215

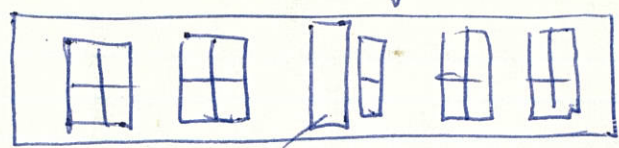
- PH. TINTERN STN SCENE (EARLY MORNING GOODS)
- PH. MORN GOODS PASSING LLANDOGO HALT CV 57 & 57A BW 9/35 CV 55
- PH " " ENT. TINTERN TUNNEL BW 10/5
- PH GDS TRAIN ON VIADUCT FROM MON (MAY HILL) TO MON TROY BW 10/7
- " " " " " " (TROY TO CHEPSTOW) CV 53A BW 10/11 CV 54
- PH MON TROY STN (REFRESH. ROOM) BW 10/12 VG
- PH TINTERN STN VG & BOX CV 53
- PH FAMILY EMERGING TUNNEL CV 54A
- PH MORN. GOODS ENTERING TUNNEL TO CHEPSTOW CV 55A
- PH FAMILY RESTING ON TRACK NR TIN. STW CV 56
- PH ~~THE~~ LLANDOGO HALT (VIEW OF HILL) PROP CV 56A
- PH OF VALLEY (RD. RAIL. & RIVER NR LLANDOGO) EV 58
- PH DAILY GOODS. ROSS ON WYE TO LYDBROOK JCT BW 25/45
- PH DAILY GOODS LYDBROOK JCT TO ROSS ON WYE 1964 BW 67/13

MAY 62

MONTGOMERY

4th May 62.

Stn Sidings: - GW Bogie Brake 40' (ON BLOCKS)



VG.

cook owl

© 12 MILE BRANCH PASS. SERV WITH. MAR 2ND 1959

SEE ALSO (POSSIBLY) - HEATHFIELD BRANCH

FROM EXETER (ST THOMAS)

MORETON HAMPSTEAD

BRANCH

(FROM NEWTON ABBOTT)

PHOTO "HEATHFIELD" STN (OLD NOTICE BOARD - TRAINS TO TRUSHAM ETC BW 28/3
PHOTO MORETON HAMPSTEAD STN FROM BUFFER STOPS BW 28/4
" " " (INSIDE) BW 28/5 & 6
" " " FROM RD 17
PH. STN (ALL OVER ROOF) CV 155
PH. BOVEY STN (ON M. HAMPSTEAD BRCH) CV 155A
PH. PULLABROOK HALT (-----) CV 156
PH. TRAIN OF 4W Coaches at MORETON HAMPSTEAD STN 52/18

MORETON-IN-MARSH STN

PH. WORCESTER TO PADD. EXP. IN STN

CV. 117A

June 62.

~~NEW~~ MOSTON SIDINGS

Met MR BOYD at small hut near Newton Heath Sch. JCN.
He suggested contacting Mr Ken Turner (Moston Box)

who is a keen MODEL RAIL FAN. (HORNBY 3-RAIL) (SHIFT 2-10PM STARTING 11TH JUNE & EVERY 3 WEEKS THEREAFTER)

MR KEN TURNER
3, BIRCHDALE ST. MOSS SIDE M/C 14

MOTOR CYCLES
~~NEW~~ SHEET 1

PH.	LINE OF HONDAS (OULTON PARK)	CV 12A.
PH	AERIAL ARROW TWIN (- - - -)	CV 13
PH	BMW & STEIB SIDECAR (- - - -)	CV 13A.
PH	ANNE WITH DUCATTI (GLOUCESTER)	CV 16A.
PH	HONDA 250 CC DRAWING.	BW 36/32
PH.	LES GRAHAM ON MOUNTAIN	BW 37/34
PH	GE DUKE AT BALLAUGH	BW 37/35
PH.	'WHITE' B.M.W. Douglas Perm. 1.0.M	CV 232
PH	'RED' B.S.A. " " "	CV 232A
PH	CHROME PLATED VINCENT TWIN (- - -)	CV 233
PH	VINTAGE SINGER (Douglas Perm 1.0.M.)	CV 233A
PH	'BLACK' SUNBEAM (- - - -)	CV 234
PH	CHATER LEA & SIDECAR 'AA' (- - - -)	CV 234A
PH	BELT DRIVE DOUGLAS TWIN (- - -)	CV 235
PH.	BELT DR. DOUGLAS TWIN & SIDECAR (- - -)	CV 235A
PH.	HONDA MONKEY BYKE 50cc (- -)	CV 236
PH	----- (WITH SIDECAR)	CV 236A & 81/16

PH. SCOTT SQUIRREL (DOUGLAS PROM. I.O.M.) CV. 237.
 PH VINCENT BIG TWIN (- - - -) CV 237A
 PH TWO 1000 cc' SQUARIALS WITH SIDECAR (DENSHAW) CV. 238

 PH 4 CYL. 1000 cc SQUARIAL WITH SIDECAR (- - -) CV 238 A
 PH SIDECAR RACE I.O.M 1965 (NR 33RD MILESTONE) CV 239 & 81/14&15
 PH 1965 TT. (WED). ON BRAY HILL. CV. 239A.
 PH (LOWTON RALLY 1965) 1920 SUNBEAM CV. 261
 PH VCC. 1921 BRADBURY TWIN CV 261A
 PH - - - - - 1914 'FIV' MC. SHAFT DRIVE CV 262
 PH 'DOUGLAS' RACING BYKE VR 98/35

MUCH WENLOCK
BRANCH

ART. R WORLD NOV 54 P. 256
 " R MAG FEB 52 P. 136 (A. CARTER)

& (FROM CRAVEN ARMS)
 FROM WELLINGTON
 PASS SERV. W.D.
 DEC 1951

PH 3-10 PM TRAIN FOR MUCH WEN. AT WELLINGTON STN CV 101
 PH GOODS TRAIN AT BUILDWAS JCT (ON MUCH WENLOCK BRANCH) 59/8

MUSEUMS

SEE OVER
FOR BTC ARCHIVES
REFERENCE (ROYAL OAK)

PADDINGTON ARCHIVES. (1ST STATION OUT OF PADDINGTON) ROYAL OAK?
HOURS → 9-30 - 4-30 BUT UNTIL 8-30 (TUESDAY)
 SAT. 9-30 to 11-30 AM.

BTC ARCHIVES Royal Oak (PER COL STREV.)

	CLASS REFERENCE	PIECE	ROOM	RACK
GWR DIAG. OF MAIL CARRIAGES 1909	GWS	49	3B	517
PHOTOS OF WAGON BRAKES (SHOWING WORKING OF VARIOUS TYPES)	"	451	"	589
WAGON DIAGS JULY 1946 (VEH. IN USE AT THAT DATE)	"	13	"	120
GAS LIT PASS. STOCK (NOT CARRIAGES) RECORDS & DIAGRAMS. (VERY FEW.) (SIPITON H.)	"	15	"	120
CARR. & WAGON SPRINGS (DESCRIPTION, SPEC. & DWGS.)	"	23	"	125
CONTAINER TRAFFIC - PHOTOS OF VARIOUS TYPES 1929-1932	"	26	"	125
" DIAGS. (CONTAINING NOTES ON LIVERY & NUMBERING)	"	28	"	125
PHOTOS OF ABSORBED RAILWAYS ROLLING STOCK & LOADS.	"	31	"	125
FREIGHT STOCK DIAGRAMS & NUMBERS OF VEHICLES (SPECIAL VEHICLES ONLY, eg. CRUC. POLLENS, LORNETS, SERPENTS IN USE AT NOV. 1910)	"	34	"	125

CORNISH REV. EXP

NAMED TRAINS

PAGE 1

V.G. ART. (SILVER ANNIVERSARY) GW MAG 1929 P271

PH. OF TRAIN IN PENSANZE STN BW20/9

ART. & PHOTOS "THE NEW CORNISH REVERIE TRAIN"

GW MAG 1935 P397

PHOTO OF DIOOG (WESTERN STAR) ON CORN REV AT SPEED THRO. STOKES CANYON BW30/31

50 YEARS OF "CORN. REV. EXPRESS.

R. MAG 54 P471

INTROD. TO THE CORNISH REVERIE EXP.

R. WORLD. SEPT 63. P331

TORBAY EXPRESS

ENTERING SAVERNAKE LL STN (UP)

" PENSEY STN (DOWN)

CV. 188

CV 188A

WHITEWASH TRAIN V.G. ART & PHOTOS.

GW MAG 1931 P301

CAMBRIAN COAST EXP.

NAMED TRAINS

BRIEF TIMETABLE & STOPS ETC

R. MAG APR 39 P.141 (A. CART)

PAGE 2

Recrd of FOOTPLATE TRIP.

R. WORLD MAR 1958 P58

ATLANTIC COAST EXPRESS SR

PH OF ABOVE @ speed thro' Sutton Bingham Stn ^{Elevated} ~~(Banked)~~ CV184A

SIMPLON ORIENT EXPRESS

ART MAP ETC V.G.

R MAG 51 P727

"BRISTOLIAN"

DOWN BRISTOLIAN OUT OF BOX TUNNEL

CV. 192A,

BRISTOL PULLMAN

UP TRAIN @ BOX STN. (MORNING)

CV. 192.

NANTLLE TRAMWAY

Ph Nantlle Tramway Scene - SLS. Tech CV 200A & 201
Ph Talysarn Sdn (change of Horse or Tractor) CV. 201A

SEE ALSO BRISTON & MYTHYR.

NEATH & BRECON
RLY.

ART. GWR MAG 1923 P6.

PHOTO 'SHEEP ON LINE' BRECON TO NEATH TRIP BW19/6 & CV151A
PH. NEATH TRAIN IN BRECON STN. (6-20 PM EX BRECON) CV 151
PH. SCENE (RESIDUOR) N & BR. RUN CV 152
PH. BUSES OUTSIDE NEATH STN (EARLY MORNING) CV. 152A

NEATH TO PONTROD
"BRANCH"

PH. PIGEON ON BUNKER OF SIGS AT HIRWAUN BW32/5

NEWBURY
BRANCH?
FROM DIDCOT

Photo Goods Train passing one Country Side near HERMITAGE CV183A

NEWCASTLE ON TYNE

COL PHOTO (LARGEST CROSSING IN WORLD)

BW .32/41

NEWPORT.

RAILWAYS OF NEWPORT.

R. MAG JULY 1960 P.451

NEWQUAY & CORNWALL
JUNCTION RLY

PH. ART. & MAP.

R. MAG 53 P693.

MAY 62

- ① SEVERAL STORED WAGS. ON LEFT SIDINGS APPROACH'G STN FROM PADD'G
- ② JUNCTION STN FOR TORQUAY WTC - SHOULD BE INTERESTING STN.

NEWTON HEATH

PHOTO SHEDS SUN. JULY 22ND 62

BW 25/23 & 24

PH. Shed Scene 30/6/68 (last day of steam)

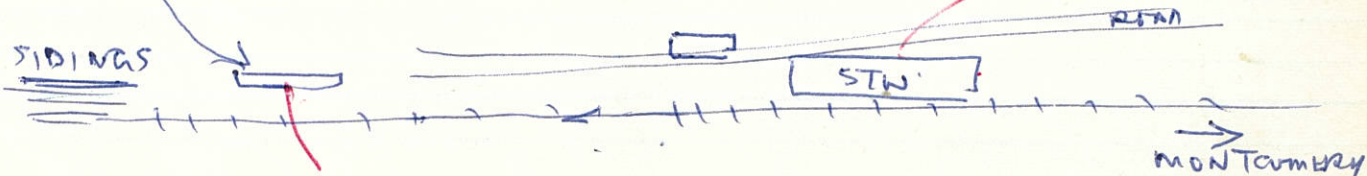
CV 289 & A.

4th May 62

G.W. 40' Boyie Brake Body on Blocks (adjacent to Sdn) on ROAD
C4 CHOC. (took photo)

also long Cleesbery Body on blocks in siding
The siding, parallel to line full of interesting G.W. vehicles FRUIT D's etc

GOT PHOTO (COL & B.W.)



PATCHED UP - DECIDED AGAINST A PHOTO - GOT SIMILAR

ACTUAL COACHES
2

OBAN BRANCH

PH. EVENING TRAIN FROM OBAN APPROACHING CRIANLARICH CV. 243.

PH. ~~VINTAGE WEIGHING M/C ON CONNELL FERRY STW (JET FOR OBAN)~~ CV 243A.
SEE ACCESSORIES

PH OBAN STW WITH CLOCK TOWER

98/10

ODDMENTS

- ① LONGEST THRO WORKING IN BRIT. 1. ILLUST. DEC 58 P. 655
- (2) BR. M.P.D.'s AT MAR 59 R. MAG MAR 59 P204
- ③ BR REGIONAL BOUNDARIES R MAG MAR 50 P202
- ④ ~~GNR MAG HISTORY. R. MAG DEC 38 P458~~

MAP OF THRO PASS SERV. ABERDEEN TO PENSANCE 785 M. GW MAR 1921 P. 268
 LONGEST STRETCH OF STRAIGHT LINE (BRITISH ISLES) RLY MAG 49 P208
 STEEPEST GRADIENTS ON PASS. LINES RLY MAG 50 P141
 BR. REGIONAL BOUNDARIES 1950 P202

PH. LNER wheelman at GRANTOWN ON SPEY EAST STN
 PH 3W PLATFORM TRUCK Montrose STN


BW98/18
 98/21

Street scene in WELSH VALLEYS
 200' HIGH ROAD ORE DIGGER 1966
 ROAD STONE 'MWR' AT RHAYDAR STN
 4-COACH MUSEUM IN DIDDY COLOURS YORK 1970

PITOTUS
 CV. 207A.
 CV 271
 92/11
 CV 304A

MR FS. ROBERTS. DISTRICT MECHANICAL INSPECTOR,
 OSWESTRY WORKS — NEARLY
 ASSIST. MR FRESLE. RETIRING.

OSWESTRY

PH. OF  ROOFED COACH BODY IN SIDINGS

58/31

PH STN SCENE

CV. 171A.

SEE ALSO FAIRFORD BCH. & PRIN. RISBOROUGH.

OXFORD

COL STR. REPORTS PYTHON B W3W ON UP LINE IMMED. SOUTH OF STN. *

OXFORD AREA

T. ILLUSTR. DEC 59 P. 596

PER J. RUSSELL - SNAKE 'D' (70' PASS. PARCEL VAN) STILL AT OXFORD ACTING AT MOBILE SHED FOR LOCO STORES

PADARN RLY

NEAR LLANBERIS

PAD. RLY (NR LLANBERIS)

R WORLD MAR 55 P. 66

(REFERRING TO COACHES & STORED WAGONS)

SLS DEC 61 P 379.

~~PHOTO SCENE AT PORT DENRYN DOCK BW 13/12~~

~~W.G. & STD G. TRACKS APP. /13.~~

LETTER & PHOTO OF LOCO

R. MAG 54 P70

PADARN RLY SCENE

CV. 204

" " (LINE OF SLATE WAGGONS)

CV. 204 A. & BW 65/15 & 16

" " (EXCHANGE VEHICLE) NR. TO A'

CV 205 & BW 65/17, 18 & 19

" " TURNTABLE

65/20

" " ASSORTED TRUCKS

65/21 & 22

PH. PADD. STN (DESERTED) SUNDAY

CV. 84

PH '6000' KING IN STN (S. WALES EX.)

CV 84A

PH. BRISTOL & BIRM. PULLMAN TRAINS IN STN

CV 85

ART. "CENTENARY" OF PADD. STN

RLY MAG 1957 P371

PARR

MAY 62.

- ① Old coaching stock incl CLR. right in STN sidings (adjacent to STN (but may be only temporary))
- ② Could be interesting spot for an afternoon.
- ③ On main line just beyond PARR STN towards PENSANCE are gradient posts of 1-88 - 1-66 etc. also beautiful Stone VIADUCTS.

PATNEY & CHIRTON
JET.

FOR DEWIZES & HOLT JET

PH GOODS TRAIN THRO PATNEY & CHIRTON JET CV. 189

PEAK FOREST
TRAMROAD

ART & PH.

R MAG AUG 41 P337 (A CART)

Pembroke & Tenby Rly.

R. MAG. OCT. 59 P. 663.

SEE ALSO BETHESDA BCH & POSSIBLY BANGOR

PENRHYN RLS.

PEN. RLY & WGS.

R. MAG MAY/JUNE 45 P. 138

PHOTO SCENE AT PORT PENRHYN DOCK
" NG & STD G TRACK APPROACHING "

BW 13/12 & CV 113

PHOTO DERELICT WGS IN WORKS NR BETHESDA
SCENE AT SLITTING SHEDS BETHESDA QUARRIES

13
BW 13/14 + 16

PH. SLATE WAGGONS (RAW & FINISHED)

SNOW ON MOUN (BETHESDA QUARRY)

13/17
CF 13 & 13A

PH. DERELICT WGS

{ CL 38 & 38A
CL 39 & 39A & 40
CV. 113A.

PH. BETHESDA QUARRY (MAIN LEVEL)

PHOTO

BW 20/9 & 10

PHOTO (EARLY MORNING)

CV. 149A.

① SEVERAL GOOD PHOTOS (FREIGHT) IN COLIN STREV
SUPPLIES MARKED A.E. WEST,
LYM RISE,
HARCOMBE RD.
RAYMONDS HILL, AXMINSTER DEVON

PHOTOGRAPHS (SOURCES)

REAL PHOTOGRAPHS CO LTD. VICTORIA HOUSE, SOUTHPORT
SEE LETTER FROM THEM (ACQUIRED THE WHITWORTH COLL. (20,000 NEGATIVES)
ALSO THE GORDON TIDEY COLLECT. I HAVE SEVERAL LISTS

PAMLIN PRINTS, 73, TEMPLE RD., CROYDON.
SEE LETTER FROM THEM - NOT MUCH ROLLING STOCK OF ANY KIND

(L. & G. R. P.) LOCOMOTIVE & GENERAL RLY PHOTOGRAPHS.
9, REGENT PLACE RUGBY, WARCS.
SHOULD BE ON THE MARKET AGAIN SOON (PER COL STREV. JAN 63)
(ALL RLY SUBJECTS)

COPYRIGHT PHOTO BY J.H. ASTON & 63, MALDEN HILL
3, GROVELANDS CLOSE NEW MALDEN, SURREY
BURGESS HILL 86729 BURGESS HILL SUSSEX
~~(SOLD BY LENS OF SUTTON 50, CARSHALTON RD. SUTTON, SURREY)~~

THE LOCOMOTIVE PUBLISHING CO LTD.
88, HORSEFERRY RD, LONDON SW1
SEE MY CATAL. NOW FROM IAN ALLAN (SEE LEAFLET →)

WETHERSET COLLECTION P.C. SIZE AV. AT 2/6 EACH
GOT LIST - (ALL LOCUS) - SEE MY FILES. IAN ALLEN, CRAVEN HOUSE HAMPTON COURT SURREY